

Primary Findings

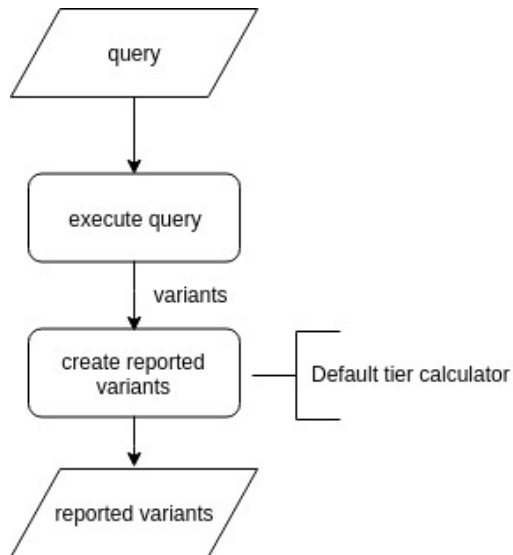
In OpenCGA, users can retrieve primary findings by defining a variant query according to their needs. Multiple query filters can be used in the query: a list of panels, sample names, consequence types, population frequencies, biotypes, family segregation... For each retrieved variant, a reported variant will be created with its reported events and tier values.

Table of Contents:

- [Implementation](#)
- [Input parameters](#)
- [Output results](#)

Implementation

OpenCGA implements the primary finding analysis by executing a variant query defined by the user and then, creating the reported events for those variants and using the default tier calculator to assign the corresponding tier value.



Input parameters

- A variant query

Output results

- List of reported variants